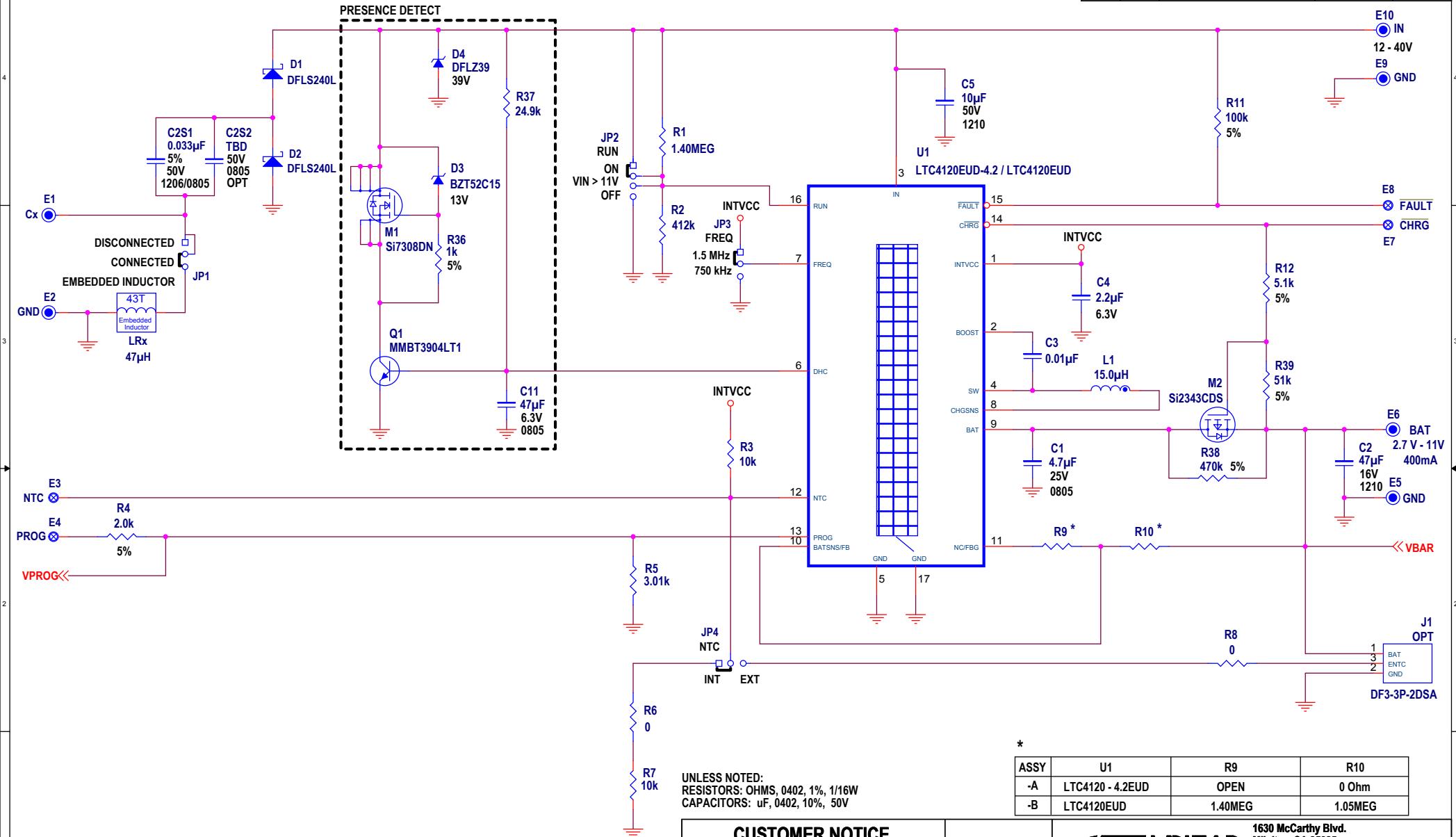


REVISION HISTORY				
ECO	REV	DESCRIPTION	APPROVED	DATE
-	1	PRODUCTION	GEORGE B.	9 - 25 - 15



ASSY	U1	R9	R10
-A	LTC4120 - 4.2EUD	OPEN	0 Ohm
-B	LTC4120EUD	1.40MEG	1.05MEG

CUSTOMER NOTICE

LINEAR TECHNOLOGY HAS MADE A BEST EFFORT TO DESIGN A CIRCUIT THAT MEETS CUSTOMER-SUPPLIED SPECIFICATIONS; HOWEVER, IT REMAINS THE CUSTOMER'S RESPONSIBILITY TO VERIFY PROPER AND RELIABLE OPERATION IN THE ACTUAL APPLICATION. COMPONENT SUBSTITUTION AND PRINTED CIRCUIT BOARD LAYOUT MAY SIGNIFICANTLY AFFECT CIRCUIT PERFORMANCE OR RELIABILITY. CONTACT LINEAR TECHNOLOGY APPLICATIONS ENGINEERING FOR ASSISTANCE.

THIS CIRCUIT IS PROPRIETARY TO LINEAR TECHNOLOGY AND SUPPLIED FOR USE WITH LINEAR TECHNOLOGY PARTS.

APPROVALS

PCB DES. NC
 APP ENG. GEORGE B.

SCALE = NONE



1630 McCarthy Blvd.
 Milpitas, CA 95035
 Phone: (408)432-1900 www.linear.com
 Fax: (408)434-0507
 LTC Confidential-For Customer Use Only

TITLE: SCHEMATIC

400mA WIRELESS SYNCHRONOUS BUCK BATTERY CHARGER

SIZE N/A IC NO. LTC4120EUD - 4.2 / LTC4120EUD
 DEMO CIRCUIT 2445A - A / B REV. 1

DATE: 9 - 25 - 15 SHEET 1 OF 2

Linear Technology Corporation

LTC4120EUD-4.2/LTC4120EUD

ENGR: GEORGE B. (011-087)

BILL OF MATERIALS

DC2445-1-A/B GENERAL BOM

QTY- 600

10/28/2015

Item	Qty	Reference	Part Description	Manufacturer / Part #
				NUMBER OF BOARDS =
1	1	C2S1	CAP, CHIP, C0G, 0.033µF, ±5%, 50V, 1206/0805	TDK, C2012C0G1H333J125AA
2	0	C2S2	CAP, CHIP, C0G, TBD, ±5%, 50V, 0603	TBD
3	1	C1	CAP, CHIP, X5R, 4.7µF, ±10%, 25V, 0805	TDK, C2012X5R1E475K
4	1	C2	CAP, CHIP, X5R, 47µF, ±10%, 16V, 1210	MURATA, GRM32ER61C476KE15L
5	1	C3	CAP, CHIP, X7R, 0.01µF, ±10%, 50V, 0402	TDK, C1005X7R1H103R050BB
6	1	C4	CAP, CHIP, X5R, 2.2µF, ±20%, 6.3V, 0402	MURATA, GRM155R60J225ME15D
7	1	C5	CAP, CHIP, X7S, 10µF, ±20%, 50V, 1210	TDK, C3225X7S1H106M
8	3	C6, C8, C9	CAP, CHIP, X7R, 0.01µF, ±10%, 25V, 0402	TDK, C1005X7R1E103K
9	2	C7, C10	CAP, CHIP, X5R, 1µF, ±10%, 16V, 0402	TDK, C1005X5R1C105K
10	1	C11	CAP, CHIP, X5R, 47µF, ±20%, 6.3V, 0805	TDK, C2012X5R0J476M
11	3	D1, D2	DIODE, SCHOTTKY, 40V, 2A, PowerDI123	DIODES, DFLS240L-7
12	1	D3	DIODE, ZENER, 13V, ±5%, 150mW, SOD-523	DIODES, BZT52C13T-7
13	1	D4	DIODE, ZENER, 39V, ±5%, 1W, PowerDI123	DIODES, DFLZ39
14	8	D5-D12	DIODE, LED, GREEN, 0603	LITE-ON, LTST-C193KGKT-5A
15	6	E1-E2, E5-E6, E9-E10	TURRET, 0.09 DIA	MILL-MAX, 2501-2-00-80-00-00-07-0
16	4	E3-E4, E7-E8	TURRET, 0.061 DIA	MILL-MAX, 2308-2-00-80-00-00-07-0
17	1	FD1	25mm Ferrite Disc	ELNA MAGNETICS, B67410-A0223-X195
18	0	J1-OPT	CONN, 3 Pin Polarized	HIROSE, DF3-3P-2DSA
19	4	JP1, JP3-JP5	HEADER, 3 PIN JUMPER, 2mm	SAMTEC, TMM-103-02-L-S
20	1	JP2	HEADER, 4 PIN JUMPER, 2mm	SAMTEC, TMM-104-02-L-S
21	5	JP1-JP5	SHUNT, 2mm	SAMTEC, 2SN-KB-G
22	0	LRx	IND, EMBEDDED, 47µH, 43Turns	EMBEDDED
23	1	L1	IND, SMT, 15µH, 260mΩ, ±20%, 0.86A, 4mmX4mm	COILCRAFT, LPS4018-153ML
24	1	M1	MOSFET, SMT, 60V, 72mΩ, PowerPAK1212-8	VISHAY, Si7308DN-T1-GE3
25	1	M2	MOSFET, SMT, 30V, 75mΩ, SOT23	VISHAY, Si2343CDS-T1-GE3
26	1	Q1	NPN, SMT, 40V, SOT23	Diodes Inc, MMBT3904-7-F
27	1	R1	RES, CHIP, 1.40MEG, ±1%, 1/16W, 0402	VISHAY, CRCW04021M40FKED
28	1	R2	RES, CHIP, 412kΩ, ±1%, 1/16W, 0402	VISHAY, CRCW0402412KFKED
29	2	R3, R7	RES, CHIP, 10kΩ, ±1%, 1/16W, 0402	VISHAY, CRCW040210K0FKED
30	1	R4	RES, CHIP, 2kΩ, ±5%, 1/16W, 0402	VISHAY, CRCW04022K00JNED
31	1	R5	RES, CHIP, 3.01kΩ, ±1%, 1/16W, 0402	VISHAY, CRCW04023K01FKED
32	2	R6, R8	RES, CHIP, 0Ω jumper, 1/16W, 0402	VISHAY, CRCW04020000Z0ED
33	1	R11	RES, CHIP, 100kΩ, ±5%, 1/16W, 0402	VISHAY, CRCW0402100KJNED
34	1	R12	RES, CHIP, 5.1kΩ, ±5%, 1/16W, 0402	VISHAY, CRCW04025K10JNED
35	1	R13	RES, CHIP, 10kΩ, ±5%, 1/16W, 0402	VISHAY, CRCW040210K0JNED
36	2	R14, R35	RES, CHIP, 432Ω, ±1%, 1/16W, 0402	VISHAY, CRCW0402432RFFKED
37	2	R15, R33	RES, CHIP, 22.6kΩ, ±1%, 1/16W, 0402	VISHAY, CRCW040222K6FKED
38	1	R16	RES, CHIP, 34.8kΩ, ±1%, 1/16W, 0402	VISHAY, CRCW040234K8FKED
39	7	R17-R23	RES, CHIP, 100kΩ, ±1%, 1/16W, 0402	VISHAY, CRCW0402100KFKED
40	1	R24	RES, CHIP, 49.9kΩ, ±1%, 1/16W, 0402	VISHAY, CRCW040249K9FKED
41	8	R25-R32	RES, CHIP, 1kΩ, ±5%, 1/16W, 0402	VISHAY, CRCW04021K00JNED
42	1	R34	RES, CHIP, 787kΩ, ±1%, 1/16W, 0402	VISHAY, CRCW0402787KFKED
43	1	R36	RES, CHIP, 1kΩ, ±5%, 1/16W, 0402	VISHAY, CRCW04021K00JNED
44	1	R37	RES, CHIP, 24.9kΩ, ±1%, 1/16W, 0402	VISHAY, CRCW040224K9FKED
45	1	R38	RES, CHIP, 470kΩ, ±5%, 1/16W, 0402	VISHAY, CRCW0402470KJNED
46	1	R39	RES, CHIP, 51kΩ, ±5%, 1/16W, 0402	VISHAY, CRCW040251K0JNED
47	2	U2, U3	Ultralow Power Quad Comparators With Reference, 5mmX4mmDFN16	LINEAR TECH., LTC1445CDHD
48	4		Clear 0.085" X 0.335" bumper	KEYSTONE, 784-C
49	0.00394		SCOTCH, REMOVABLE POSTER TAPE W/DISPENSER, 75in.x150in.	3M, MMM109
50	4		STAND - OFF, NYLON, 0.500" tall (Snap on)	KEYSTONE, 8833 (SNAP ON)
51	1		FAB, PRINTED CIRCUIT BOARD	DEMO CIRCUIT 2445A-1
52	2		STENCILS, TOP & BOTTOM	DC2445A-1

Linear Technology Corporation

LTC4120EUD-4.2

ENGR: GEORGE B. (011-087)

BILL OF MATERIALS

DC2445A-1-A

QTY- 0

10/28/2015

<i>Item</i>	<i>Qty</i>	<i>Reference</i>	<i>Part Description</i>	<i>Manufacturer / Part #</i>
				NUMBER OF BOARDS =
1	0	R9	No Load, SMD 0402	
2	1	R10	RES, CHIP,0Ω jumper, 1/16W, 0402	VISHAY, CRCW04020000Z0ED
3	1	U1	400mA Wireless Synchronous Buck Battery Charger, 3mmX3mmQFN16	LINEAR TECH., LTC4120EUD-4.2

Linear Technology Corporation

LTC4120EUD

ENGR: GEORGE B. (011-087)

BILL OF MATERIALS

DC2445A-1-B

QTY- 600

10/28/2015

<i>Item</i>	<i>Qty</i>	<i>Reference</i>	<i>Part Description</i>	<i>Manufacturer / Part #</i>
				NUMBER OF BOARDS =
1	1	R9	RES, CHIP, 1.40MEG, $\pm 1\%$, 1/16W, 0402	VISHAY, CRCW04021M40FKED
2	1	R10	RES, CHIP, 1.05MEG, $\pm 1\%$, 1/16W, 0402	VISHAY, CRCW04021M05FKED
3	1	U1	400mA Wireless Synchronous Buck Battery Charger, 3mmX3mmQFN16	LINEAR TECH., LTC4120EUD

	Qty	Reference	Part Description	Manufacture / Part #
REQUIRED CIRCUIT COMPONENTS:				
1	1	C2S1	CAP, CHIP, C0G, 0.033μF, ±5%, 50V, 1206/0805	TDK, C2012C0G1H333J125AA
2	1	C1	CAP, CHIP, X5R, 4.7μF, ±10%, 25V, 0805	TDK, C2012X5R1E475K
3	1	C2	CAP, CHIP, X5R, 47μF, ±10%, 16V, 1210	MURATA, GRM32ER61C476KE15L
4	1	C3	CAP, CHIP, X7R, 0.01μF, ±10%, 50V, 0402	TDK, C1005X7R1H103R050BB
5	1	C4	CAP, CHIP, X5R, 2.2μF, ±20%, 6.3V, 0402	MURATA, GRM155R60J225ME15D
6	1	C5	CAP, CHIP, X7S, 10μF, ±20%, 50V, 1210	TDK, C3225X7S1H106M
7	1	C11	CAP, CHIP, X5R, 47μF, ±20%, 6.3V, 0805	TDK, C2012X5R0J476M
8	2	D1, D2	DIODE, SCHOTTKY, 40V, 2A, PowerDI123	DIODES, DFSL240L
9	1	D3	DIODE, ZENER, 13V, ±5%, 150mW, SOD-523	DIODES, BZT52C13T-7
10	1	D4	DIODE, Zener, 39V, ±5%, 1W, PowerDI123	DIODES, DFLZ39
11	1	FD1	25mm Ferrite Disc	ELNA MAGNETICS, B67410-A0223-X195
12	0	LRx	IND, EMBEDDED, 47μH, 43turns	EMBEDDED
13	1	L1	IND, SMT, 15μH, 260mΩ, ±20%, 0.86A, 4mmX4mm	LPS4018-153ML
14	1	M1	MOSFET, SMT, 60V, 72mΩ, PowerPAK1212-8	VISHAY, Si7308DN-T1-GE3
15	1	M2	MOSFET, SMT, 30V, 75mΩ, SOT23	VISHAY, Si2343CDS-T1-GE3
16	1	Q1	NPN, SMT, 40V, SOT23	Diodes Inc, MMBT3904-7-F
17	1	R1	RES, CHIP, 1.40MEG, ±1%, 1/16W, 0402	VISHAY, CRCW04021M40FKED
18	1	R2	RES, CHIP, 412kΩ, ±1%, 1/16W, 0402	VISHAY, CRCW0402412KFKED
19	2	R3, R7	RES, CHIP, 10kΩ, ±1%, 1/16W, 0402	VISHAY, CRCW040210K0FKED
20	1	R5	RES, CHIP, 3.01kΩ, ±1, 1/16W, 0402	VISHAY, CRCW04023K01FKED
21	2	R6, R8	RES, CHIP, 0Ω jumper, 1/16W, 0402	VISHAY, CRCW04020000Z0ED
26	1	R12	RES, CHIP, 5.1kΩ, ±5%, 1/16W, 0402	VISHAY, CRCW04025K10JNED
22	1	R36	RES, CHIP, 1kΩ, ±5%, 1/16W, 0402	VISHAY, CRCW04021K00JNED
23	1	R37	RES, CHIP, 24.9kΩ, ±1%, 1/16W, 0402	VISHAY, CRCW040224K9FKED
24	1	R38	RES, CHIP, 470kΩ, ±5%, 1/16W, 0402	VISHAY, CRCW0402470KJNED
25	1	R39	RES, CHIP, 51kΩ, ±5%, 1/16W, 0402	VISHAY, CRCW040251K0JNED
ADDITIONAL DEMO BOARD CIRCUIT COMPONENTS:				
1	1	C2S2-OPT	CAP, CHIP, C0G,TBD, ±5%, 50V, 0603	TBD
2	2	C7, C10	CAP, CHIP, X5R, 1μF, ±10%, 16V, 0402	TDK, C1005X5R1C105K
3	3	C6, C8, C9	CAP, CHIP, X7R, 0.01μF, ±10%, 25V, 0402	TDK, C1005X7R1E103K
4	8	D5 ~ D12	DIODE, LED, GREEN, 0603	LITE-ON, LTST-C193KGKT-5A
5	1	R4	RES, CHIP, 2kΩ, ±5%, 1/16W, 0402	VISHAY, CRCW04022K00JNED
6	1	R11	RES, CHIP, 100kΩ, ±5%, 1/16W, 0402	VISHAY, CRCW0402100KJNED
7	1	R13	RES, CHIP, 10kΩ, ±5%, 1/16W, 0402	VISHAY, CRCW040210K0JNED
8	2	R14, R35	RES, CHIP, 432Ω, ±1%, 1/16W, 0402	VISHAY, CRCW0402432RFKED
9	2	R15, R33	RES, CHIP, 22.6kΩ, ±1%, 1/16W, 0402	VISHAY, CRCW040222K6FKED
10	1	R16	RES, CHIP, 34.8kΩ, ±1%, 1/16W, 0402	VISHAY, CRCW040234K8FKED
11	7	R17 ~ R23	RES, CHIP, 100kΩ, ±1%, 1/16W, 0402	VISHAY, CRCW0402100KFKED
12	1	R24	RES, CHIP, 49.9kΩ, ±1%, 1/16W, 0402	VISHAY, CRCW040249K9FKED
13	8	R25 ~ R32	RES, CHIP, 1kΩ, ±5%, 1/16W, 0402	VISHAY, CRCW04021K00JNED
14	1	R34	RES, CHIP, 787kΩ, ±1%, 1/16W, 0402	VISHAY, CRCW0402787KFKED
15	2	U2, U3	Ultralow Power Quad Comparators With Reference, 5mmX4mmDFN16	LINEAR TECH., LTC1445CDHD
HARDWARE FOR DEMO BOARD ONLY:				
1	6	E1, E2, E5, E6, E9, E10	TURRET, 0.091"	MILL-MAX, 2501-2-00-80-00-00-07-0
2	4	E3, E4, E7, E8	TURRET, 0.061"	MILL-MAX, 2308-2-00-80-00-00-07-0
3	0	J1-OPT	CONN, 3 Pin Polarized	HIROSE, DF3-3P-2DSA
4	4	JP1, JP3-JP5	HEADER, 3 PIN JUMPER, 2mm	SAMTEC, TMM-103-02-L-S
5	1	JP2	HEADER, 4 PIN JUMPER, 2mm	SAMTEC, TMM-104-02-L-S
6	5	JP1-JP5	SHUNT, 2mm	SAMTEC, 2SN-BK-G
7	4		Clear 0.085" X 0.335" bumper	KEYSTONE, 784-C
8	1		SCOTCH, REMOVABLE POSTER TAPE W/DISPENSER, 75in.x150in.	3M, MMM109
9	4		STAND-OFF, NYLON, 0.375"	KEYSTONE, 8832

Linear Technology Corporation

LTC4120EUD-4.2

BILL OF MATERIALS

DEMO BD. # DC2445ACF-A-1

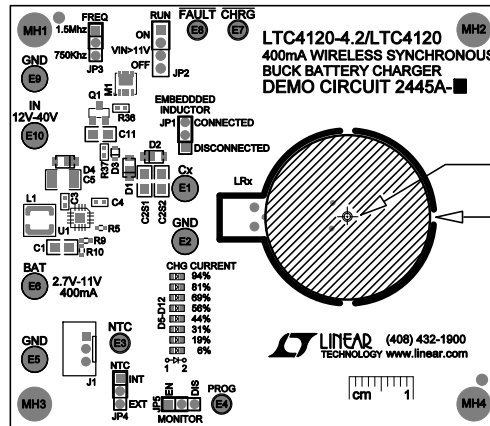
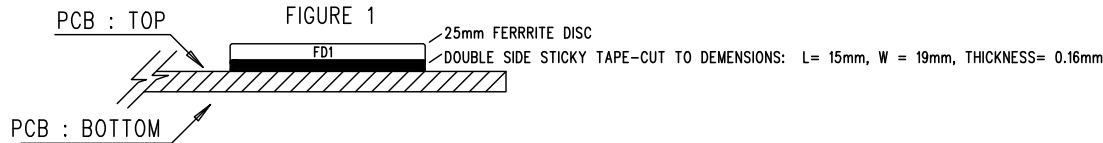
10/28/2015

	Qty	Reference	Part Description	Manufacture / Part #
REQUIRED CIRCUIT COMPONENTS:				
1	0	R9	No Load. SMD 0402	
2	1	R10	RES, CHIP, 0 Ω jumper, 1/16W, 0402	VISHAY, CRCW04020000Z0ED
3	1	U1	400mA Wireless Synchronous Buck Battery Charger, 3mmX3mmQFN16	LINEAR TECH., LTC4120EUD-4.2

	Qty	Reference	Part Description	Manufacture / Part #
REQUIRED CIRCUIT COMPONENTS:				
1	1	R9	RES, CHIP, 1.40MEG, $\pm 1\%$, 1/16W, 0402	VISHAY, CRCW04021M40FKED
2	1	R10	RES, CHIP, 1.05MEG, $\pm 1\%$, 1/16W, 0402	VISHAY, CRCW04021M05FKED
3	1	U1	400mA Wireless Synchronous Buck Battery Charger, 3mmX3mmQFN16	LINEAR TECH., LTC4120EUD

FERRITE DISC- FD1: ASSEMBLY DIAGRAM

PER FIG 1. - CUT AND PLACE DOUBLE SIDED STICKY TAPE WITHIN CENTER ALIGNMENT AREA FOR FD1 - PART # 3M, MMM109
 - ALIGN DISC AND GENTLY PLACE FD1 WHERE TAPE IS - PART # ADAMS MAGNETICS, B67410-A0223-X195

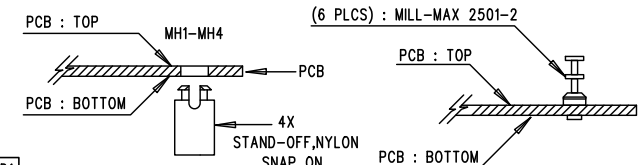


8. CENTER ALIGNMENT FOR DISC, FD1
 SEE FIG. 1

FD1 LOCATION
 SEE FIG. 1


NOTES: UNLESS OTHERWISE SPECIFIED

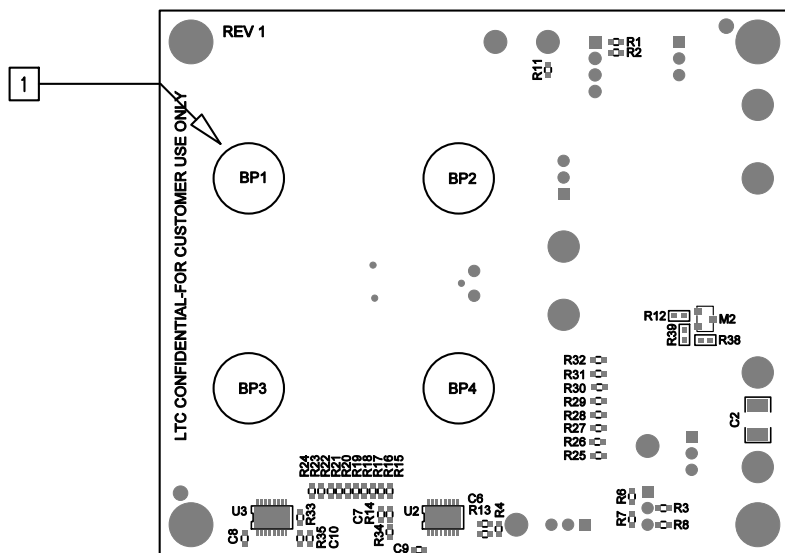
1. WORKMANSHIP SHALL BE IN ACCORDANCE WITH IPC-A-610, CLASS 2.
2. ASSEMBLY PROCESS SHALL INCLUDE: REFLOW SOLDER TOP SIDE SMD. MAXIMUM SOLDER TEMPERATURE IS 240 DEGREES CELSIUS.
3. PARTS TO OMIT WILL BE SPECIFIED ON THE BILL OF MATERIALS. LOCATIONS OF OMITTED PARTS SHALL BE FREE OF SOLDER. MASK THE SOLDER STENCIL WHERE SMT PARTS ARE OMITTED.
4. INSTALL SHUNTS AS SHOWN ON ASSY DRAWING.
5. DEPANELIZE BOARDS AFTER ASSEMBLY AND ROUTE-OUT THE BREAKOUT TABS ON FOUR SIDES OF THE BOARD EDGE.
6. DO NOT APPLY ANY KIND OF ASSEMBLY STAMP OR QA STAMP TO ANY BOARD.
7. INSTALL TURRETS AND 4 STANDOFFS AT LOCATIONS SHOWN BELOW:



8. THERE ARE TWO ASSEMBLY VERSIONS FOR THIS DESIGN: -A AND -B PLEASE SEE BILL OF MATERIALS AND TABLE BELOW TO MARK EACH VERSION CORRECTLY BY BLACK PERMANENT MARKER.


ASSY	U1	R9	R10
-A	LTC4120EUD-4.2	OPEN	0 Ohm
-B	LTC4120EUD	1.40MEG	1.05MEG

APPROVALS		 LINEAR TECHNOLOGY		1630 MCCARTHY BLVD MILPITAS, CA 95035 Ph: (408)432-1900 www.linear.com LTC CONFIDENTIAL- FOR CUSTOMER USE ONLY	
PCB DES.	NC				
APP ENG.	GEORGE B.				
		TITLE: TOP ASSEMBLY DRAWING: 400ma WIRELESS SYNCHRONOUS BUCK BATTERY CHARGER			
		SIZE	IC NO.	LTC4120EUD-4.2/LTC4120EUD	REV.
		N/A		DEMO CIRCUIT 2445A-A/B	1
SCALE = NONE		FILENAME: DC2445A-1.PCB		SHT 1 of 2	



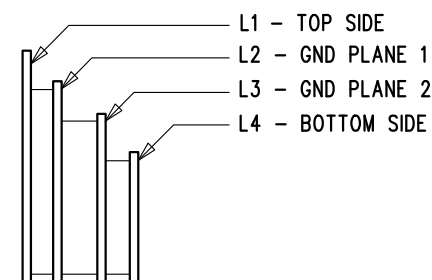
NOTES: UNLESS OTHERWISE SPECIFIED

1. BP1-BP4 SELF ADHESIVE BUMPER LOCATIONS.

APPROVALS		 LINEAR TECHNOLOGY 1630 MCCARTHY BLVD MILPITAS, CA 95035 PH: (408)432-1900 www.Linear.com LTC CONFIDENTIAL-FOR CUSTOMER USE ONLY	
PCB DES.	NC		
APP ENG.	GEORGE B.	TITLE: BOTTOM ASSEMBLY DRAWING: 400mA WIRELESS SYNCHRONOUS BUCK BATTERY CHARGER	
		SIZE	IC NO. LTC4120EUD-4.2/LTC4120EUD
		N/A	DEMO CIRCUIT 2445-A/B
			REV. 1
SCALE = NONE		FILENAME: DC2445A-1.PCB	
		SHT 2 of 2	

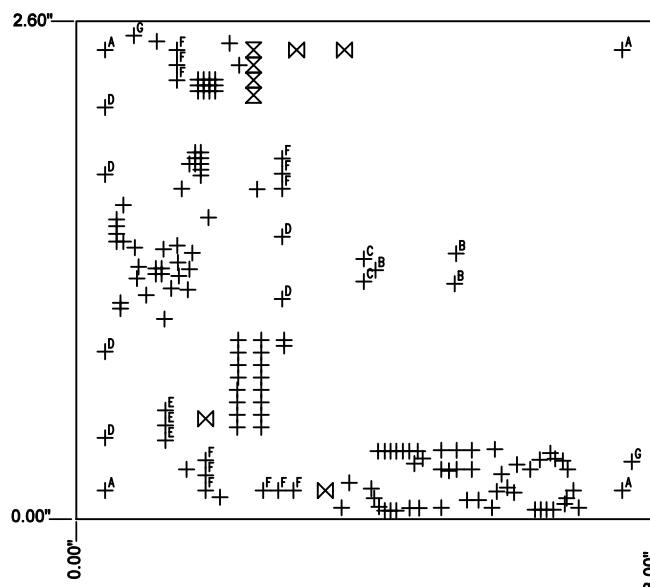
REVISION HISTORY				
ECO	REV	DESCRIPTION	APPR	DATE
-	1	PRODUCTION FAB	GEORGE B.	9-25-15

LAYER STRUCTURE


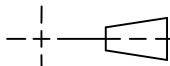


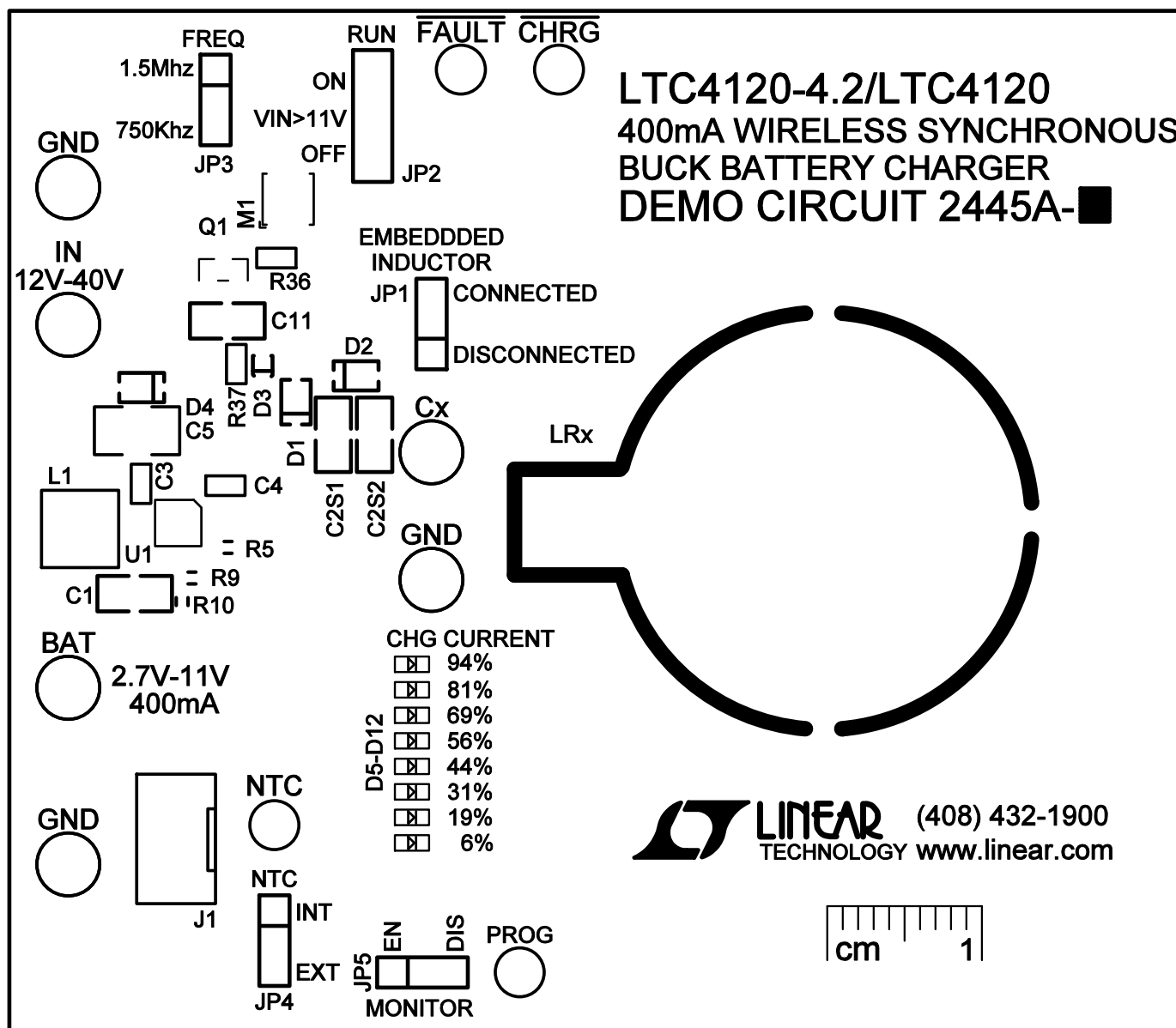
NOTES: UNLESS OTHERWISE SPECIFIED

- FAB PER IPC-A-600, CLASS 2.
- MATERIAL: -LEAD FREE ASSEMBLY COMPLIANT, ISOLA FR-370HR OR EQUIVALENT.
-FINISHED THICKNESS TO BE 0.031" +/- .005"
-TOTAL OF 4 LAYERS WITH 2 OZ. CU ON THE OUTER LAYERS AND 2 OZ. CU ON THE INNER LAYERS.
-FLAMMABILITY RATING: 94 V-0 MINIMUM.
- SIZE: CUT TO DIMENSIONS AND TOLERANCES SHOWN.
0.00 ARE PRIMARY DATUMS.
- DRILLING: -DRILL HOLES PER SCHEDULE. PLATE THROUGH HOLES WITH COPPER, 0.001" THICK MIN.
-ALL HOLE SIZES ARE SPECIFIED AFTER PLATING.
-HOLE LOCATION TOLERANCES ARE +/-0.003" IN RELATION TO CENTER
- FINISH: -SMOBC USING LPI BOTH SIDES, COLOR GREEN, NO TENT.
-GOLD IMMERSION BOTH SIDES.
(LEAD FREE SOLDER CAN BE USED FOR PROTOTYPE)
-FOR SILKSCREEN: BOTH SIDES USE WHITE NON-CONDUCTIVE INK.
- DO NOT ALTER ARTWORK e.g. TO ADD LOGO OR DATE CODE.
PAD SIZE CAN BE MODIFIED TO MEET END FINISH.
- PCBS ARE TO BE RoHS COMPLIANT.

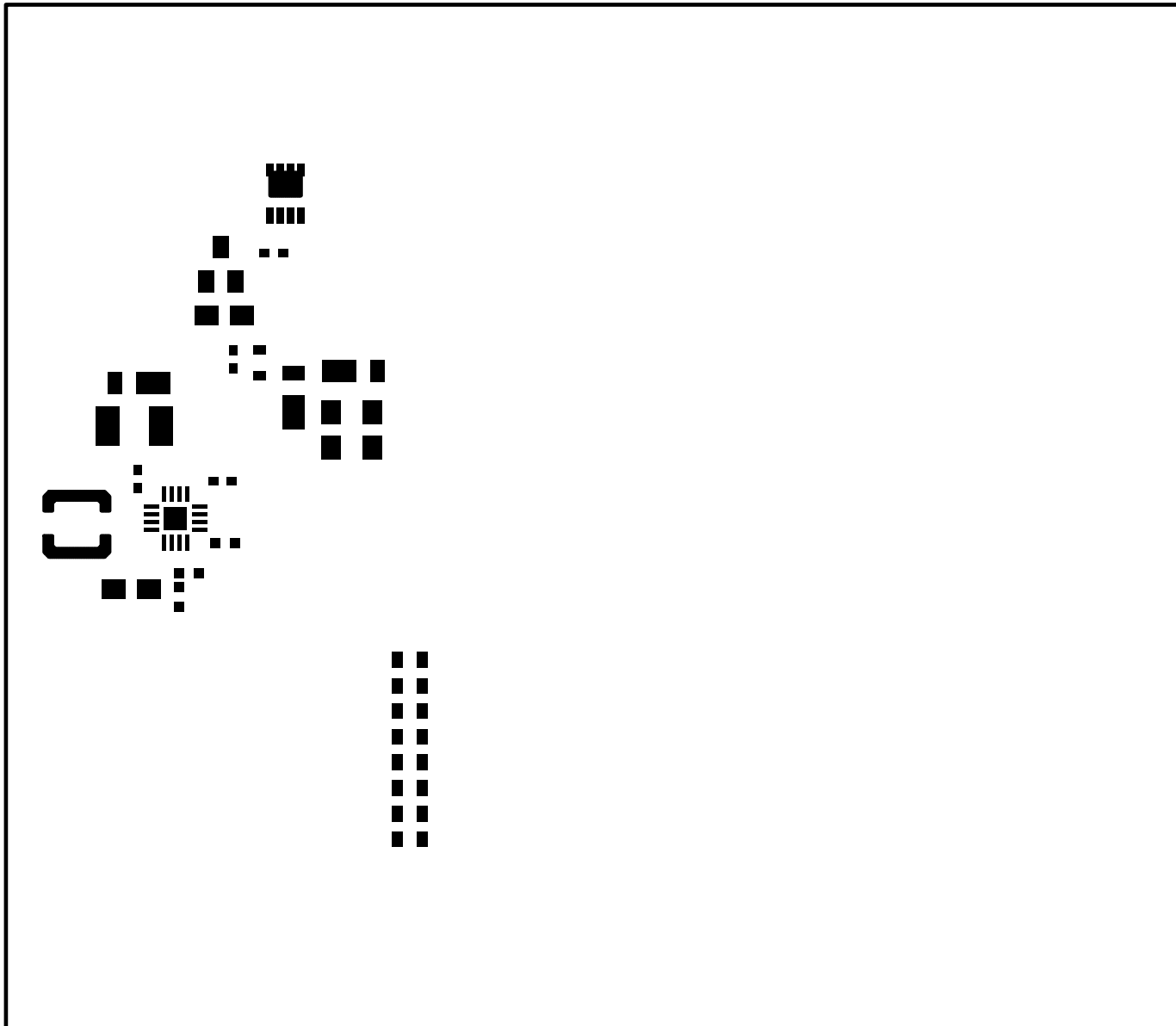


SIZE	QTY	SYM	PLATED	TOL
0.01	122	+	YES	+/-0.003"
0.037	4	X	YES	+/-0.003"
0.063	4	X	YES	+/-0.003"
0.187	4	A	YES	+/-0.003"
0.015	3	B	YES	+/-0.003"
0.025	2	C	YES	+/-0.003"
0.094	6	D	YES	+/-0.003"
0.0311	3	E	YES	+/-0.003"
0.031	12	F	YES	+/-0.003"
0.07	2	G	NO	+/-0.003"

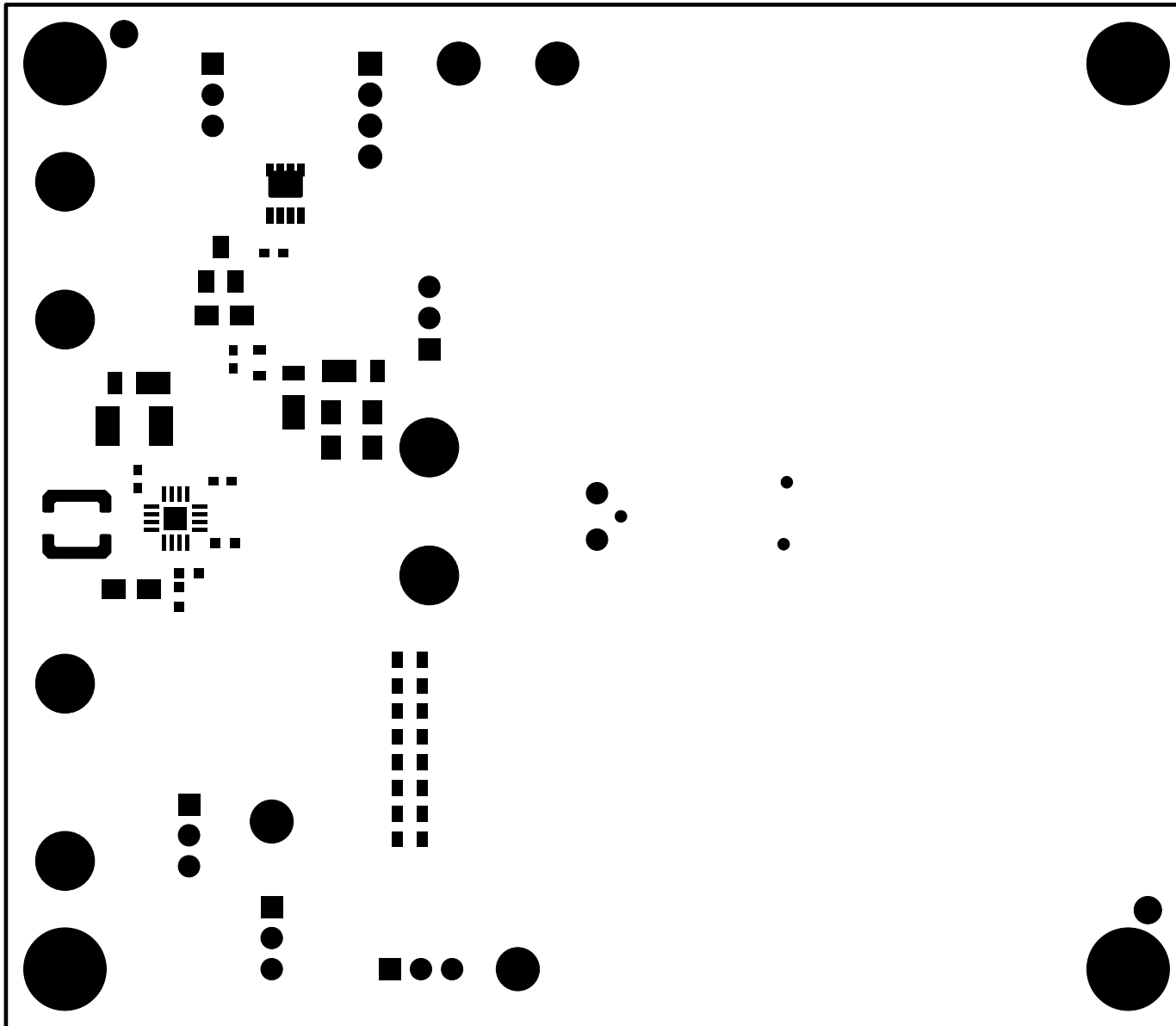
UNLESS OTHERWISE SPECIFIED DIMENSIONS ARE IN INCHES TOLERANCES ON ANGLE ±1 0.XX" = ±0.01" 0.XXX" = ±0.005" INTERPRET DIM AND TOL PER ASME Y14.5M-1994	APPROVALS		 1630 MCCARTHY BLVD MILPITAS, CA 95035 PH: (408)432-1900 www.linear.com LTC CONFIDENTIAL- FOR CUSTOMER USE ONLY
	PCB DES.	NC	
THIRD ANGLE PROJECTION 	APP ENG.	GEORGE B.	TITLE: FABRICATION DRAWING: 400mA WIRELESS SYNCHRONOUS BUCK BATTERY CHARGER
DO NOT SCALE DRAWING	SCALE: NONE	FILENAME: DC2445A-1.PCB	SIZE N/A IC NO. LTC4120EUD-4.2/LTC4120EUD DEMO CIRCUIT 2445A-A/B REV. 1 SHT 1 of 1



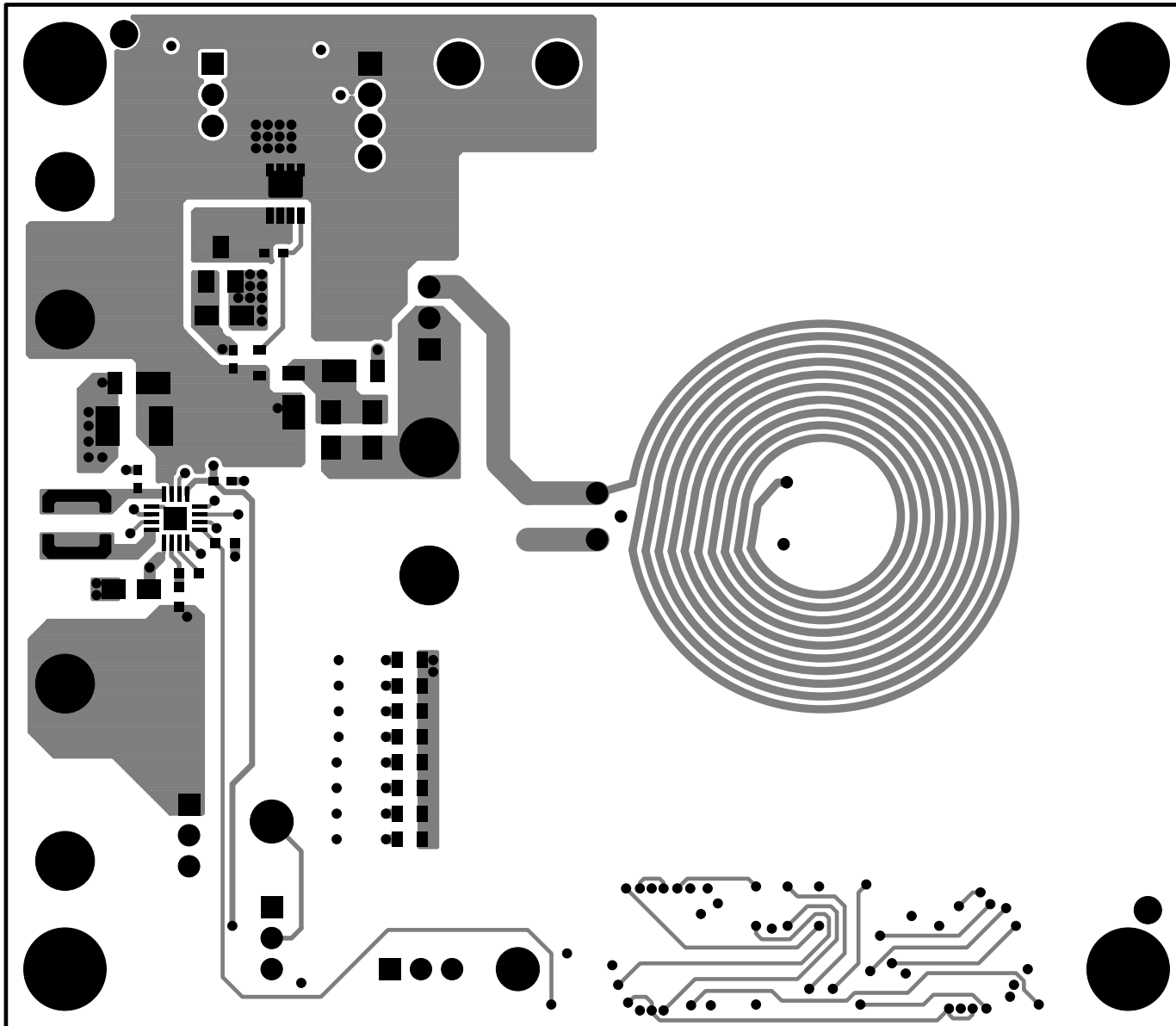
TOP SILKSCREEN
LINEAR TECH CORP.
DEMO CIRCUIT 2445A-1-A/B * LTC4120-4.2/LTC4120
400mA WIRELESS SYNCHRONOUS BUCK BATTERY CHARGER
DATE: 9-25-15



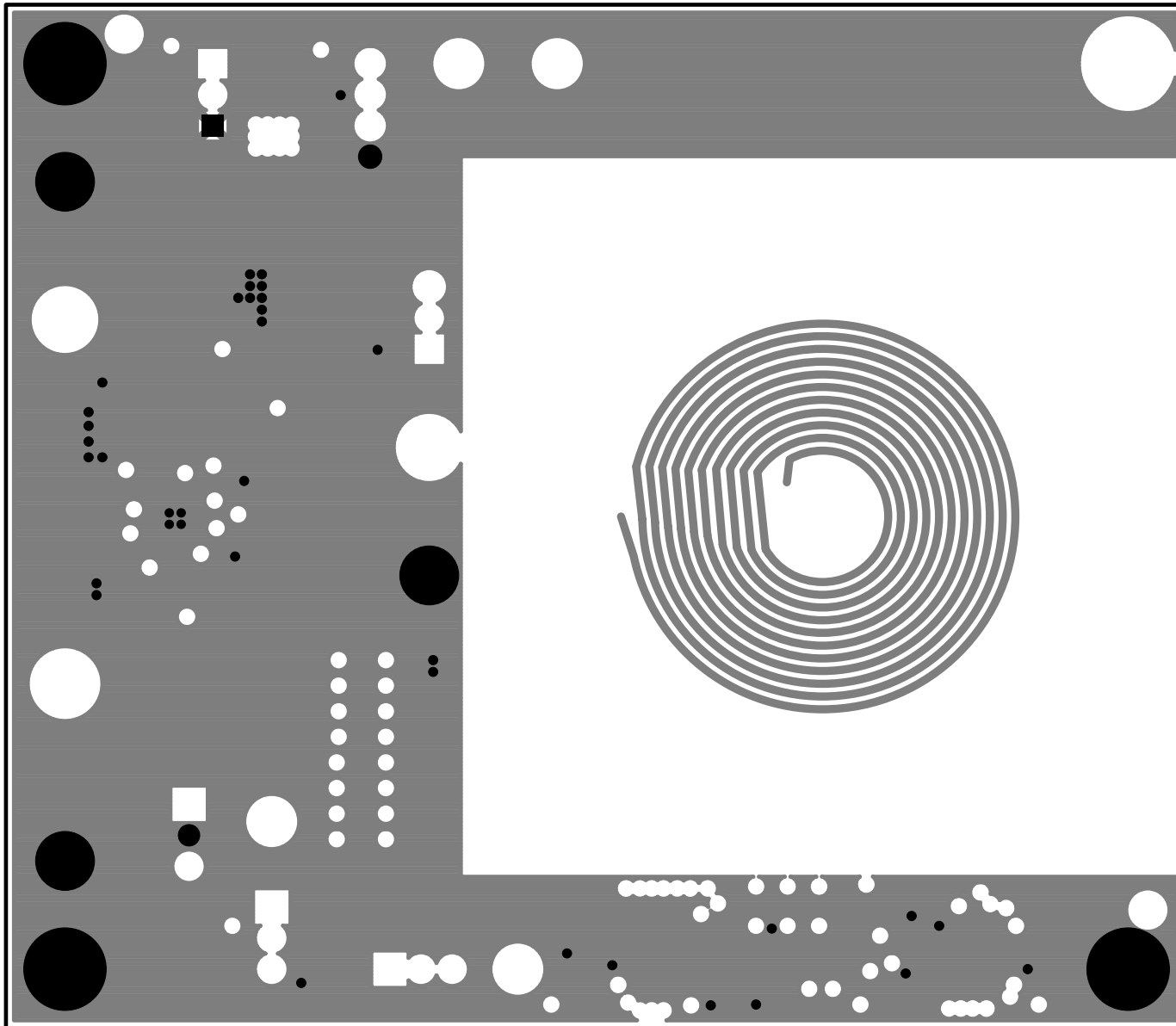
TOP SOLDER PASTE
LINEAR TECH CORP.
DEMO CIRCUIT 2445A-1-A/B * LTC4120-4.2/LTC4120
400mA WIRELESS SYNCHRONOUS BUCK BATTERY CHARGER
DATE: 9-25-15



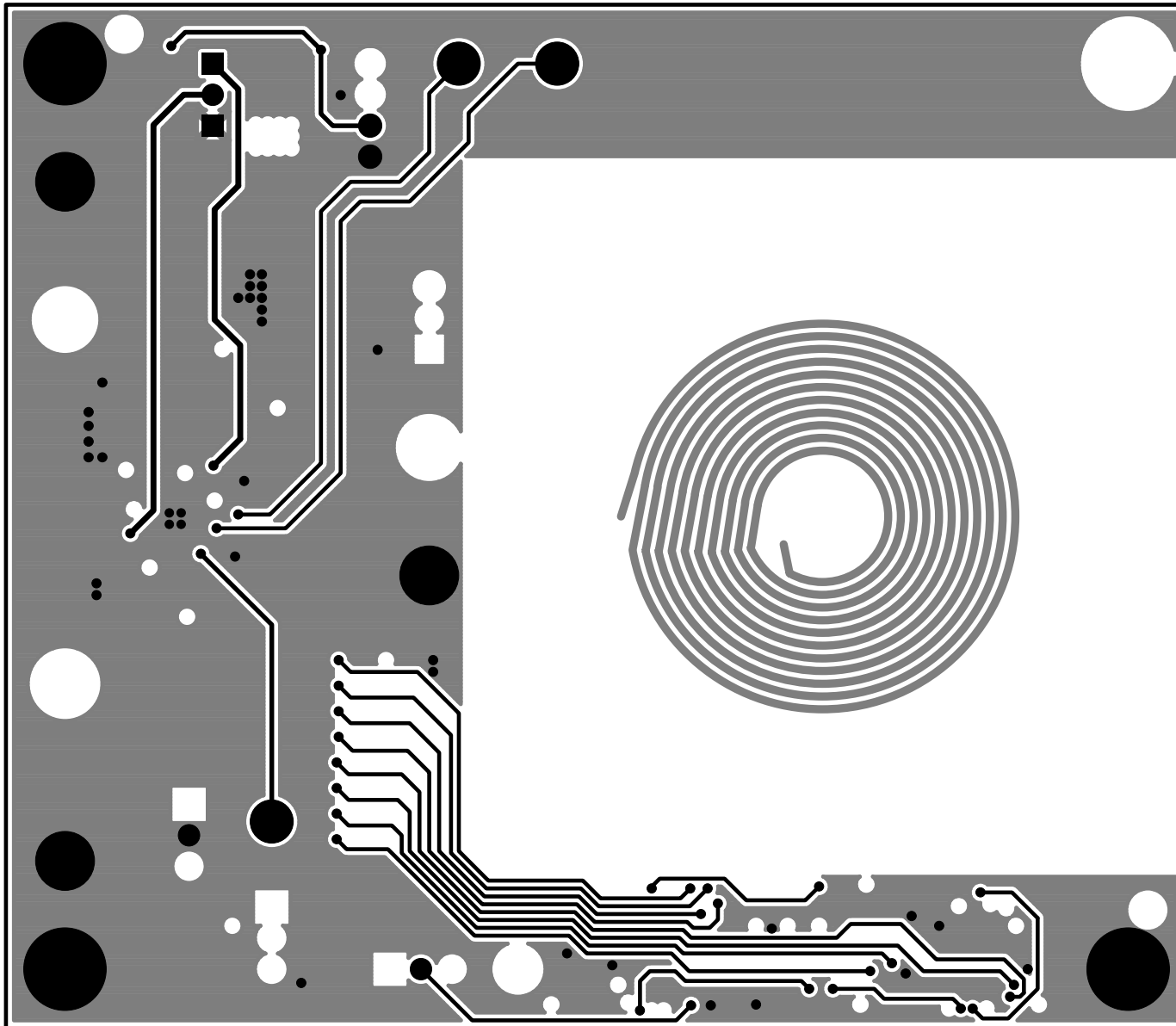
TOP SOLDER MASK
LINEAR TECH CORP.
DEMO CIRCUIT 2445A-1-A/B * LTC4120-4.2/LTC4120
400mA WIRELESS SYNCHRONOUS BUCK BATTERY CHARGER
DATE: 9-25-15



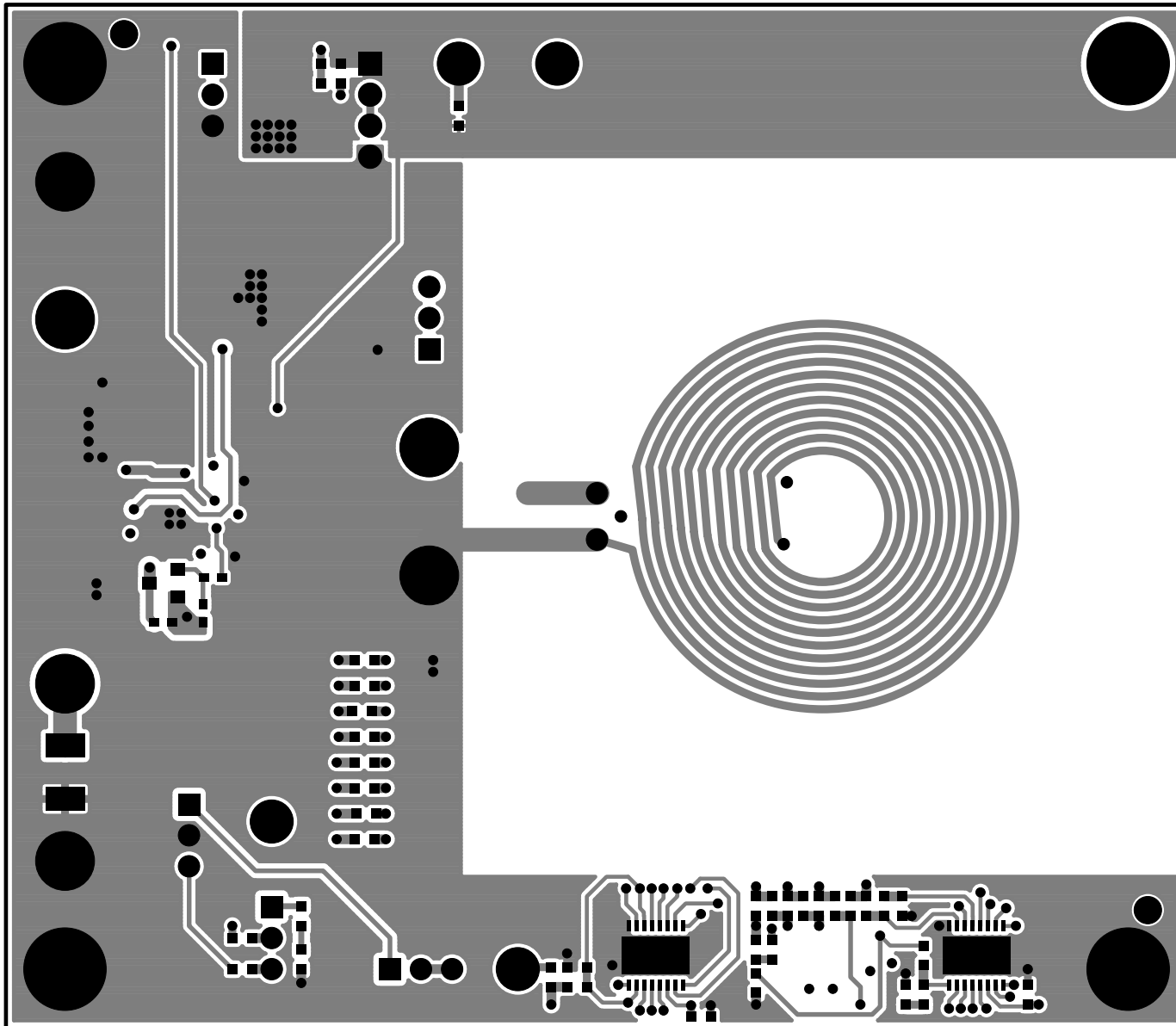
LAYER 1 : TOP LAYER
LINEAR TECH CORP.
DEMO CIRCUIT 2445A-1-A/B * LTC4120-4.2/LTC4120
400mA WIRELESS SYNCHRONOUS BUCK BATTERY CHARGER
DATE: 9-25-15



LAYER 2 : GND PLANE
LINEAR TECH CORP.
DEMO CIRCUIT 2445A-1-A/B * LTC4120-4.2/LTC4120
400mA WIRELESS SYNCHRONOUS BUCK BATTERY CHARGER
DATE: 9-25-15



LAYER 3 : GND PLANE 2
LINEAR TECH CORP.
DEMO CIRCUIT 2445A-1-A/B * LTC4120-4.2/LTC4120
400mA WIRELESS SYNCHRONOUS BUCK BATTERY CHARGER
DATE: 9-25-15



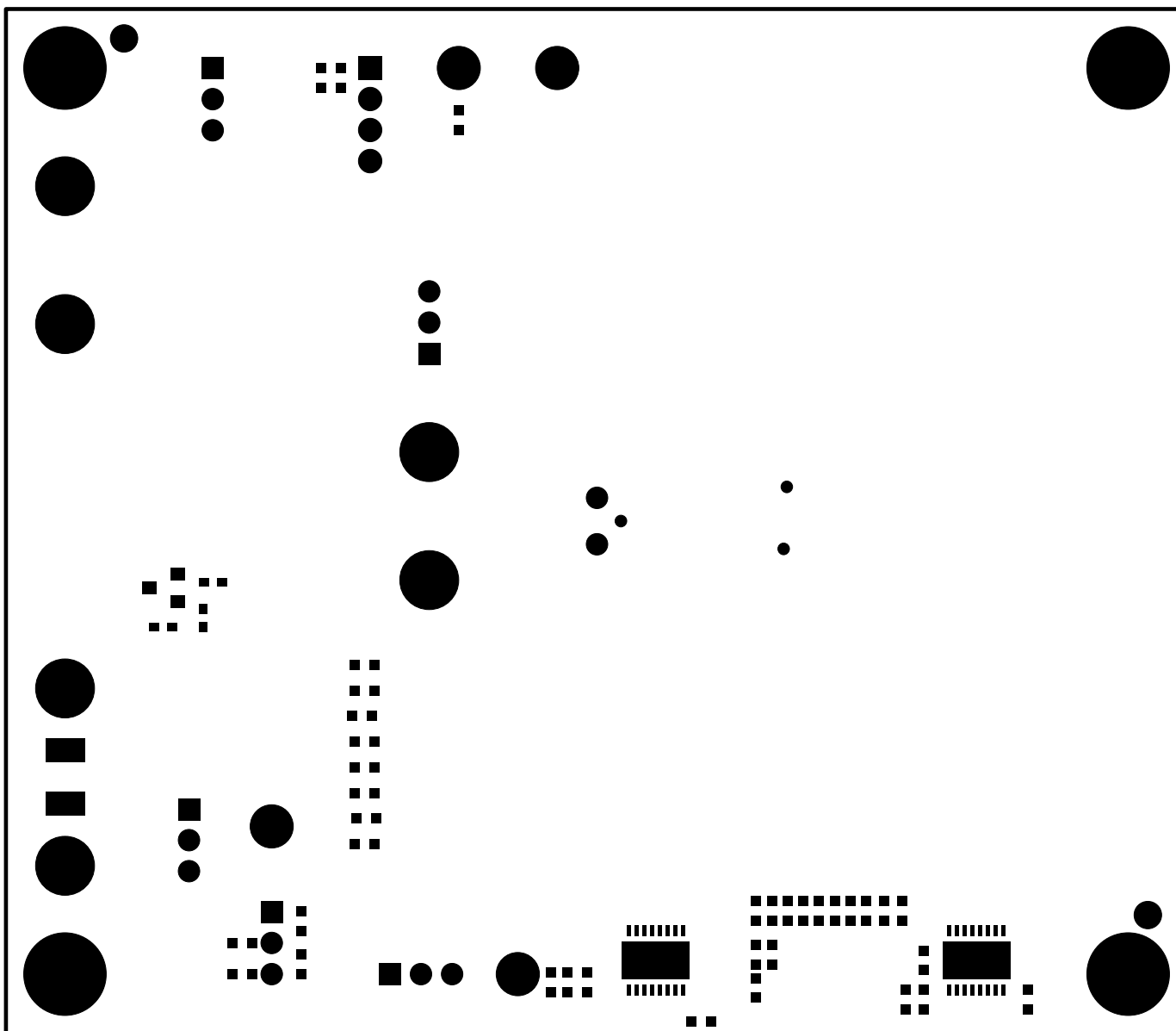
LAYER 4 : BOTTOM LAYER

LINEAR TECH CORP.

DEMO CIRCUIT 2445A-1-A/B * LTC4120-4.2/LTC4120

400mA WIRELESS SYNCHRONOUS BUCK BATTERY CHARGER

DATE: 9-25-15



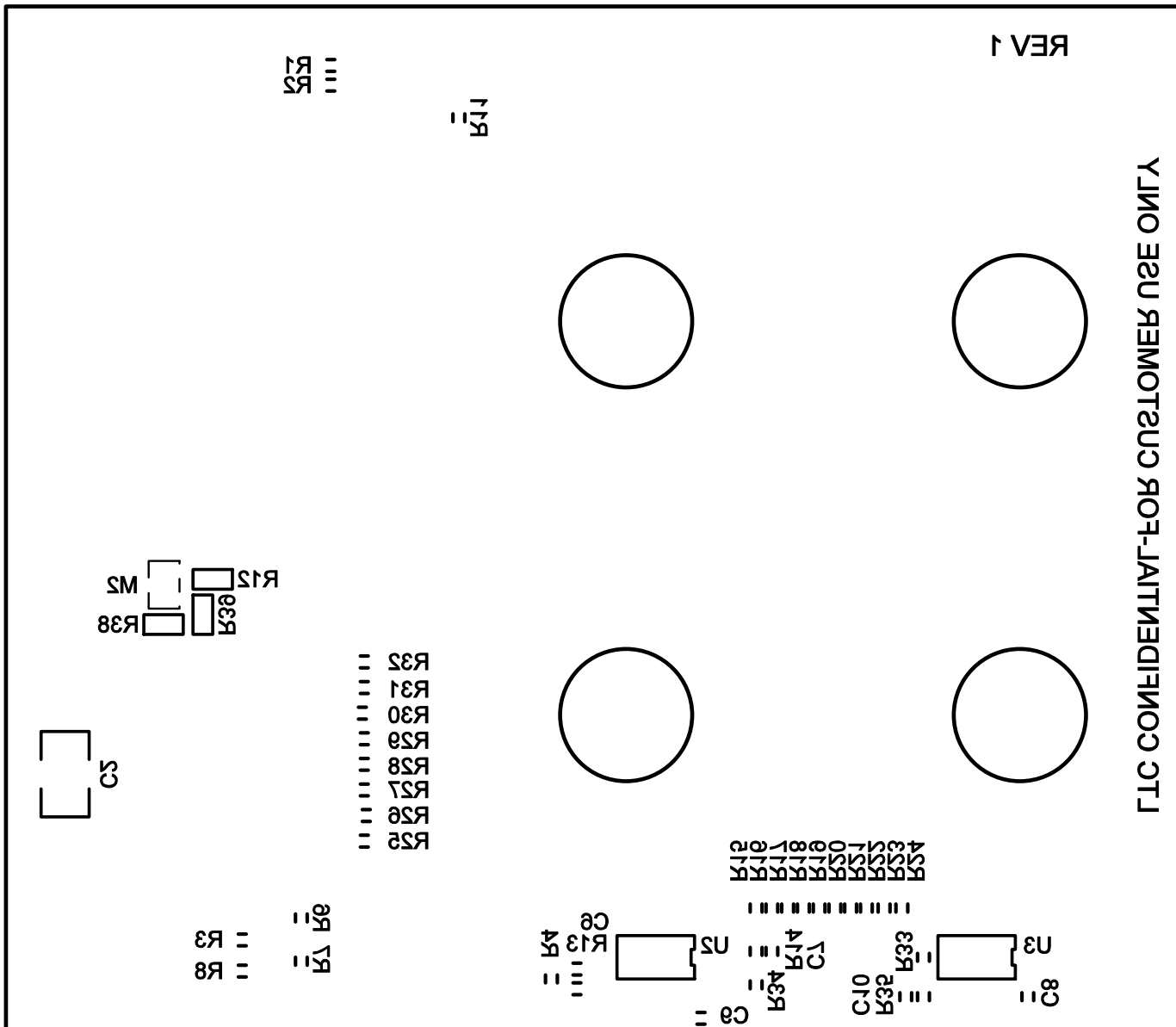
BOTTOM SOLDER MASK

LINEAR TECH CORP.

DEMO CIRCUIT 2445A-1-A/B * LTC4120-4.2/LTC4120

400mA WIRELESS SYNCHRONOUS BUCK BATTERY CHARGER

DATE: 9-25-15



BOTTOM SILKSCREEN
 LINEAR TECH CORP.
 DEMO CIRCUIT 2445A-1-A/B * LTC4120-4.2/LTC4120
 400mA WIRELESS SYNCHRONOUS BUCK BATTERY CHARGER
 DATE: 9-25-15